

Loupe
opt-on®

Headlamps
spot-on®



THE LOUPE WITH A SYSTEM

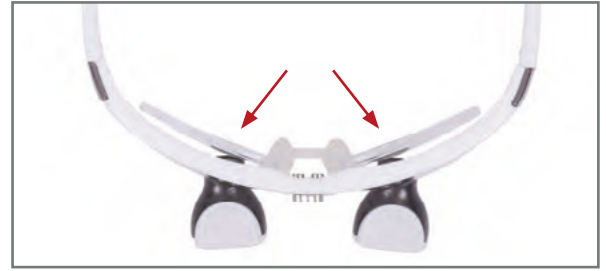
Super sharp Ultra-lightweight Most universal

orangedental
premium innovations



Dental Loupe **opt-on**®

TOP quality glasses and components



Do you already have glasses? No problem!

Wear it all day long and hardly notice it

- Light weight of only 32 g
- Sportive, aesthetic design
- Wearing comfort and greater field of view all day long
- Continuous putting on and taking off glasses is no longer necessary thus reducing risk of cross infection



Flexible working angle

- Each temple is adjustable in three stages on each side to adapt the working angle individually to posture and physiognomy

Robust

- Glasses made of robust premium-quality polymers



Flattened geometry of oculars

- Enables relaxed viewing across the oculars to patients, colleagues and screens
- No disturbing restriction of vision (smart window)
- Pleasant change of vision from distance to near = the eye relaxes
- Pat. pending

Super sharp vision

- Focus on central field of view by maximum reduction of stray light



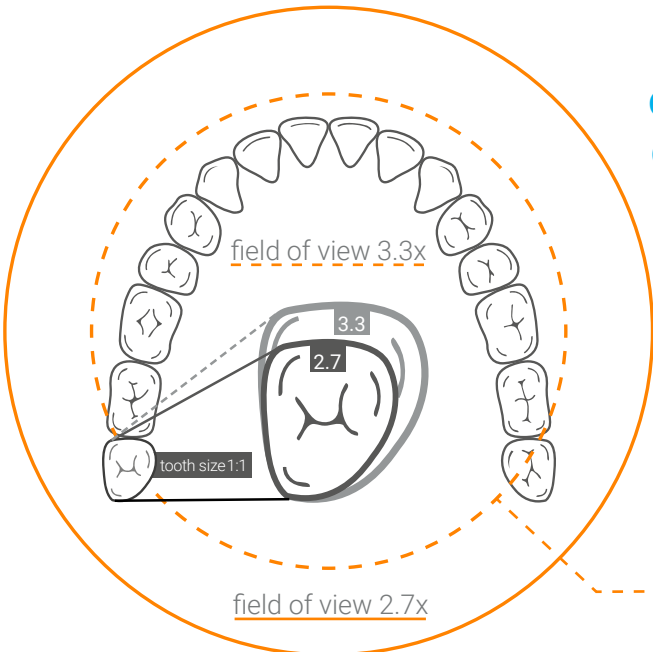
Super sharp optics

Maximum depth of field

- Quality optics made in Germany
- 3-lens system with two glass lenses and one aspheric lens according to state-of-the-art calculations for maximum depth of field



opt-on® 2.7 Loupe for first-time users opt-on® 3.3 Loupe for skilled users



2.7-fold magnification

- Can be used for any type of treatment
- Depending on the working distance, almost the entire dental arch is visible, No need to change your posture during treatment
 - Ideal for unexperienced loupe users
 - Ideal for students
- Ideal for prophylactic treatment

3.3-fold magnification

- Ideal for endodontic und implant treatment
- Use as second loupe for special cases

The field of view varies according to the magnification, chosen working distance (here: 40 cm) and individual vision correction.

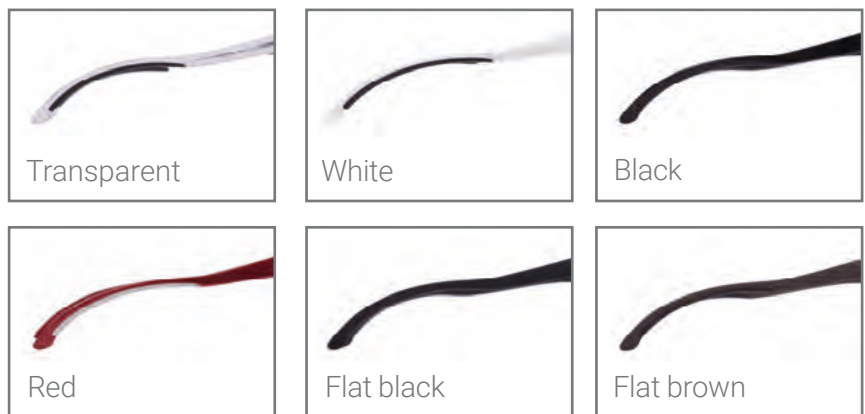
	mm [inch]	mm [inch]	mm [inch]	mm [inch]	mm [inch]	mm [inch]
Working distance (Vario clips)	250 [10]	300 [12]	350 [14]	400 [16]	450 [18]	500 [20]
Field of view 2.7x*	62,5 [2.5]	75 [3]	87,5 [3.4]	100 [3.9]	112,5 [4.4]	125 [4.9]
Field of view 3.3x*	51 [2]	61 [2.4]	72 [2.8]	82 [3.2]	92 [3.6]	102 [4]

*Approximate dimensions



Look good – feel good

Frames are available in different colours and can be replaced retroactively



Pupil distance while looking long distance

- orangedental requires your individual pupil distance, measured while looking long distance in order to manufacture your loupes in the best way.

Variable working distance

- Replaceable Vario clips to adjust the working distance retroactively by +/-5 cm
- Pat. pending

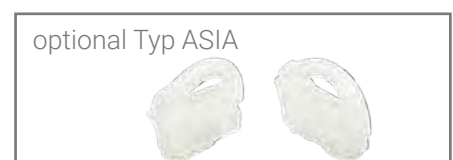


Customized loupe

- Individual pupillary distance (PD) between 56 and 76 mm as well as variable working distance by means of six selectable Vario clips 25 - 30 - 35 - 40 - 45 - 50 cm enable individually optimized vision

Comfortable fit

- Nose pads to fix in two positions each for optimal fit of loupe



Headlamp **spot-on®**Nxt

The "High-Light" – simply brilliant

- Light weight of only 7g for permanent, pleasant wearing comfort
- 45,000 lx; max. 3 hours permanent light
- 30,000 lx; max. 6 hours permanent light
- 20,000 lx; max. 9 hours permanent light
- Light quality (CRI), colour temperature, mounting options and orangefilter see next page **spot-on®Cordfree**



Powerful rechargeable battery

- Weight of only 85g
- Battery runtime of up to 9 hours
- Charging time of only 3 hours



- Optional fit for arm 2 lengths:
a) 31 cm
b) 36 cm



One-Touch - 2 functions

- Use "One-Touch" to change and indicate the light intensity in three stages (yellow)
- Three-stage battery charge indicator (green)
- Smooth surface for maximum hygiene

One-Connect - 2 functions

- Light supply or charging with one magnetic connector only (prevents short-circuits)
- When the cable tightens, the magnetic connector disengages and prevents cable break.

Bodyfit

- Convenient clip for belt, pocket or arm strap

Package contents:

- 1 rechargeable battery
- 1 charging cable with power supply



picture similar



- 1 magnetic mounting adapter (standard) or firmly fixed mounting adapter
- Reusable storage case

Headlamp **spot-on®** Cordfree

The Smart-Light – simply ingenious

- cordfree = Working easily without cables
- Extremely light weight of only 18g for permanent, pleasant wearing comfort
- Quick battery change without removing the loupes
- 20,000 lx; max. 1,0 hours permanent light
- 15,000 lx; max. 1,5 hours permanent light
- 10,000 lx; max. 2,0 hours permanent light
- Charging time for one battery of only approx. 1,0 hour
- Easy handling via multifunction touchbutton (gold)
- Configurable by tapping: on/off or angle related automatic switch-off (3 levels), increasing energy efficiency and glare protection



- Working position (head down): The **spot-on®** Cordfree turns on
- Work is interrupted (straight head): The **spot-on®** Cordfree turns off
- Daylight quality: CRI 90 (= Colour Rendering Index, CRI 100 = daylight)
- Colour temperature of 5700K corresponds to sunlight
- 2 mounting possibilities:
 - a) magnetic (standard) 
 - b) fixed (optional) 
- If you want to adapt orangedental components to other brands contact us.

orange filter

- Extreme delay of light curing
- If the filter is not needed, it can simply be elevated
- Magnet provides firm hold in two positions (folded up and down)



Package contents:

- 1 charging station for 2 batteries
- 2 rechargeable batteries
- 1 USB cable
- 1 magnetic mounting adapter (standard) or firmly fixed mounting adapter
- Quickstart guide
- Reusable storage case



- Scan QR-Code
- For instructions see "Quickstart"

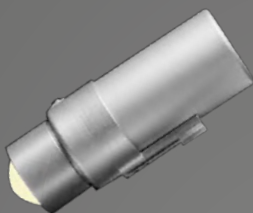
Super sharp. Ultra-lightweight. Most universal. The loupe with a system.

Fast interchange via unique magnetflex-technology

charger „Cordfree“



light system
spot-on® Cordfree



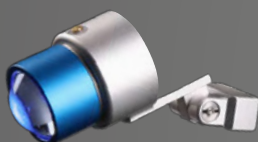
light system
spot-on® Nxt



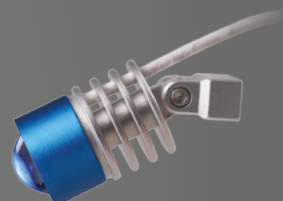
charger „Nxt“



composite identification*
spot-on® blue Cordfree



composite identification*
spot-on® blue Nxt



varioclips
for oculars



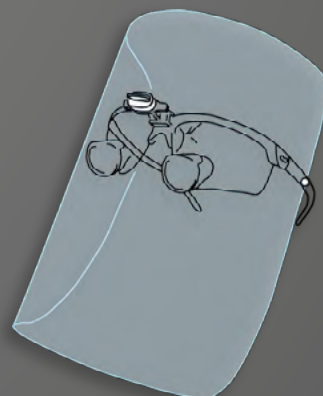
orangefilter for
light systems



correction adapter
and -glasses



face protection
shield
protect-on®



dental camera
microcam16/25 FHD
only 14 g



endopositioner**



snap on armband



*Makes the bracket cement and composite visible. **Positions light in between oculars, avoiding shadows in the root canal.

Composite identification **spot-on® blue**

Highlights bracket cement and composites for better and faster removal

- Fits on opt-on loupes
- Two versions: „cordfree“ or „nxt“ (with cable)
- No safety glasses necessary (tested according to IEC 62471)
- Fast interchange between spot-on® Nxt/Cordfree „daylight“ and spot-on blue® Nxt/Cordfree via magnetic adapter.

spot-on® blue Nxt

Light system with cable



spot-on® blue Cordfree

Light system without cable



Endopositioner

Better insights through enhanced illumination

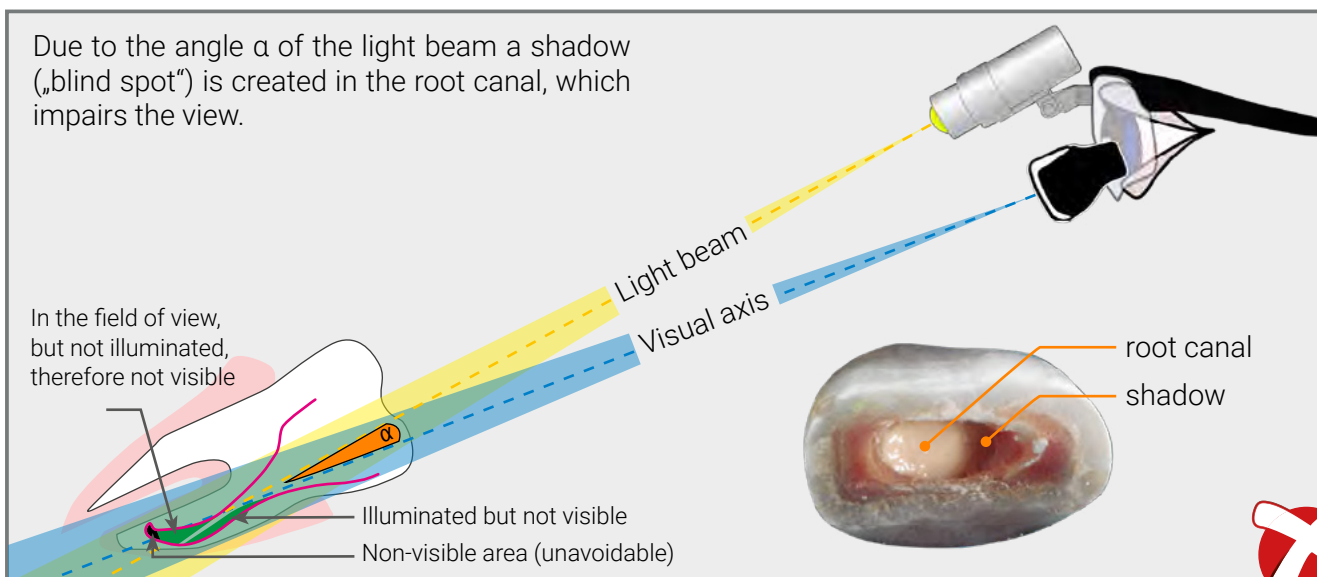


- Avoiding shadows in the root canal, because the light beam and the visual axis do not cross - for optimum vision
- Simple and fast attachment via unique magnetflex-technology
- Usable with opt-on® loupe
- Combinable with the wireless light system spot-on® Cordfree and the spot-on® Nxt

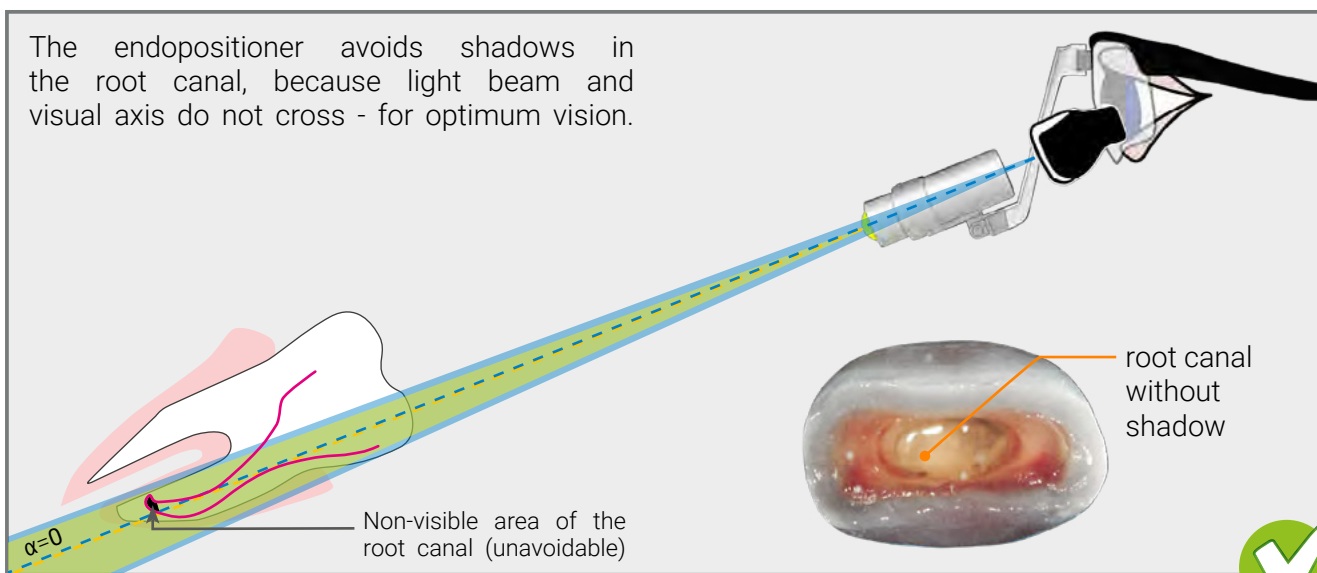


Get the light into the view

Due to the angle α of the light beam a shadow („blind spot“) is created in the root canal, which impairs the view.



The endopositioner avoids shadows in the root canal, because light beam and visual axis do not cross - for optimum vision.



Miniature cameras for **opt-on**® dental loupe

Dental camera **microcam16/25 FHD**

The most versatile and comfortable solution for patient education, documentation as well as student training



**1080p
FULL HD**



The alternative to an intraoral camera: Show your patients directly what you see without looking to any screen and use your mirror or other instruments.

- only 14 g
- Loupe or unit light mounting
- Full HD (video)
- Full aluminium body
- Hands free operations
- powered through USB
- including foot pedal

Dental camera **procam16/25 4K**

Even more detail for professionals

The procam has the same indication like the microcam, but features a with a Sony IMX 415 sensor a higher 4K resolution. This becomes important, when you are working on larger screens and looking for best quality, crystal clear videos and still images.

- only 22 g
- Medical 4K miniature camera
- Loupe or unit light mounting
- USB connection
- including foot pedal



**4K
ULTRA HD**



Free hands due to foot pedal:
The secret for video recording without having to interrupt the treatment.



protect-on face protection

The universal loupe system opt-on®/spot-on® with the optimal protection against cross infection

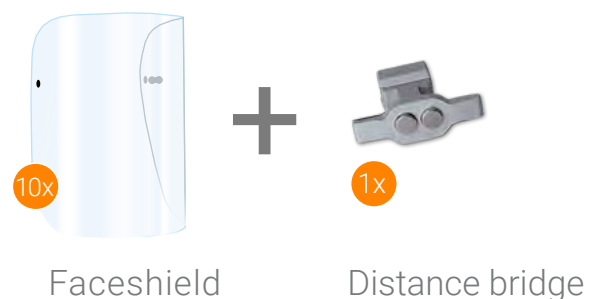
- protect-on can be attached very quickly and easily to your opt-on® loupe by using the distance bridge
- protect-on also works in combination with the light systems spot-on® Cordfree and spot-on® Nxt (Pat. Pending)
- Hygienic and high-quality PET face protection shields ensure optimum safety
- Best possible communication with staff and patients



opt-on® Protect



protect-on



LOOK GOOD



Dental Loupe **opt-on**® and Headlamp **spot-on**®

No. 1 for more than 7,000 satisfied customers



"As dental technicians, our eyes are under massive stress every day. Working in confined spaces under diverse lighting conditions is very exhausting for us. We spent a lot of money on microscopes and other optical aids. Today, we manufacture our highly precise dental prostheses only using the opt-on loupe by orangedental."

J & J Dentaltechnik
Kusterdingen/Tübingen, Germany



"With the cordfree headlamp, my opt-on glasses are incredibly light despite of the battery, still incredibly bright and working without annoying cables is a real quality gain and simply means more joy at work for me. A real high-tech product!"

Barbara Budič, Dr. med. dent.
Ljubljana, Slovenia



"With the opt-on loupe with the flattened oculars by orangedental, I can look at the patient and my colleague without touching the loupe. It saves me the trouble of changing or taking off the loupe – a fantastic relief during treatments."

Karmen Hatter, dentist
Amman, Jordan



"... because it is so light, has great depth of field and is easy to clean."

Prof. Dr. med. dent.
Kai-Hendrik Bormann
Hamburg, Germany



"Treating my patients in a professional way has become unimaginable for me without my feather-light and stylish opt-on loupe from orangedental. Before I became a satisfied customer, I was sure to work adequately without loupes. The opt-on, at an affordable price, has convinced me otherwise. It offers safety from aerosols thanks to large-area eye protection and allows me to work ergonomically by keeping the distance to the working area. I can easily adjust the working distance myself by attaching the Varioclips on the loupe by +/- 5 cm. I can also quickly and easily mount the additional light system spot-on Nxt and choose from three different light intensities. Wearing loupes also conveys professionalism and safety to patients."

Katharina Schaueremann, academic dental hygienist
Königsfeld (Schwarzwald), Germany

„Our entire life depends on our senses.
Seeing is the most comprehensive and magnificent one.
There is no doubt that all inventions which are increasing its power
are generally among the most useful ones.“

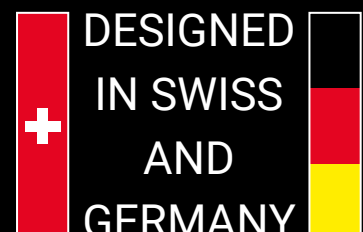
René Descartes, 1596 - 1650
French Philosopher, Mathematician and Scientist.

opt-on® is a certified medical device under ISO 13485 & MDR.

Tel.: +49 (0) 7351 . 47499 . 0
Fax: +49 (0) 7351 . 47499 . 44

info@orangedental.de
www.orangedental.de

Aspachstraße 11
D- 88400 Biberach





Výhradní obchodní a servisní zastoupení pro Česko:
CAMOSCI MORAVIA s.r.o.

obchod@camosci.cz | +420 558 675 448

Výhradné obchodné a servisné zastúpenie pre Slovensko:
CAMOSCI SLOVAKIA s.r.o.

obchod@camosci.sk | +421 483 240 033

www.camosci.eu